

Welcome to Bethel Church



From that time on Jesus began to preach,
"Repent, for the kingdom of heaven has come near."
Matthew 4:17

The Lord's Day
September 14, 2014 @ 10:30 am

Prelude

Welcome – **Pastor Elden**

Adoration & Praise – **Worship Team**

Missions Update – **Chasity Katabira**

Prayer Ministry & Offering – **Steve Klassen**

Offertory – **Worship Team**

Children's Church Prayer & Dismissal

Scripture & Prayer – **Art Warkentine**
Matthew 4:12-17

Messenger – **Pastor Randy**
Jesus' Ministry Begins

Our Response in Song

Prayer & Benediction

THIS WEEK AT BETHEL

TODAY	2:00 pm	College & Career – Amazing Race
MON	6:00 pm	SR Youth – Corn Maze
TUES	6:30 am	Men's Prayer Breakfast
WED	6:00 pm	JR Youth – Corn Maze
SUN	9:15 am	Sunday School
	10:30 am	Worship Service

**NEW
WEBSITE!**

We welcome you to check out our new website at www.ourbethelchurch.com. You will find information and schedules for our various ministries as well as audio of each week's sermon. We are not quite finished with every aspect of the site, but please check it out and invite others to see what we have to offer.

PRAISE & PRAYER

"And pray in the Spirit on all occasions with all kinds of prayers and requests. With this in mind, be alert and always keep on praying for all the saints."
Ephesians 6:18

Our Government Leaders

– serving in municipal, provincial and federal government (1 Tim. 2:1-2)



Congratulations to Allan Peters and Kimberly Irwin on their engagement!

Church Membership:

Membership is the practice of identity with a local church – acknowledging our support for the beliefs, values and goals of the congregation. If you would like more information about membership at Bethel please speak to Pastor Randy or Pastor Mark.

BETHEL'S UPCOMING EVENTS/NOTES

- Today** Awana Registration (following the church service)
Sept 15 Awana Leaders Meeting @ 7:30 pm at the church. All leaders/ listeners are encouraged to come!
Sept 24 First night of Awana!



TODAY College and Career kick off! Think you got what it takes to be the next College & Career Amazing Race champion? Come on out and join us this afternoon as we meet at the church at 2:00. Bring \$10 to cover the costs. The event will wrap up with a BBQ supper at Mark & Irma's.

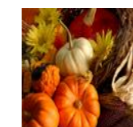


Sept 21 You are invited to join **Richard & Jessica Giesbrecht** @ 7:00 pm at the church for a coffee/dessert and an information night. They will be sharing of what they will be involved with at Youth for Christ in Portage and why they feel called to YFC as a couple. There will also be an opportunity for those who wish to support them financially.



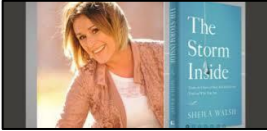
Sept 28 **The Lord's Supper** - The Lord's Supper at Bethel is not restricted to Bethel church members. All disciples of Jesus Christ are encouraged to prayerfully prepare and participate.

Sept 28 **Bethel's Golf Tournament** at the Winkler Golf Club. Tee times will start at 2:00 pm. Sign-up sheets are in the foyer. All are welcome for a wiener roast following the golf at John & Alvina Goertzen's. Please bring lawn chairs, wiener roasting sticks and a salad or dessert to share.



Oct 19 Thanksgiving Lunch - Main course will be provided. All those not involved in the meal preparation, please bring 2 pies. Everyone is welcome!

The Tuesday night **Women's Bible study** will be studying:



"*The Storm Inside*" by Sheila Walsh starting sometime in October. This is a DVD study with some home work options included.

MOMS (moms offering moms support)

A place where moms gather to encourage, support and help one another grow

Join us this fall as we take a look at the book/DVD sessions
Let.It.Go.

How to Stop Running the Show and Start Walking in Faith

We'll be meeting every other Tuesday at 9:30 am in the multipurpose room. Join us as we kick off Tuesday, Sept 23 with a morning of making your own yogurt parfaits, fellowship and introduction of the book. All moms are welcome and we'd love to see you there!



2015 MDS Missions Trip

Would you like to be a part of a 1 week mission's trip with Mennonite Disaster Service, in early February? The location, which MDS has yet to determine, will most likely be in the U.S. Costs are minimal, which include travel and food to and from the location. We are looking for approx. 15 people. Please contact Wes (332-9034) or Ashley (829-7916) by Sept 28.



Senior youth - Sept 15th

Junior youth - Sept 17th

On the specified dates each group will be going to the Corn Maze just south of Winnipeg in St. Adolphe. Meet at the church at 6. We will also be picking up in town at 6:15. We will be back around 10:30. Cost is \$15.



UPCOMING COMMUNITY EVENTS/ NOTES

Sept 28 & 29 Children's Camps International Annual Fundraising Banquets! Sunday @ 5:30pm and Monday @ 6:30pm at the Winkler MB Church. On the menu is pizza and chicken! Tickets are free but space is limited.



WBC's fall Kids Zone Sept 20 from 10:00-11:30AM at WES for kids grade 1-6 who need something to do on Saturday mornings. Get ready for an awesome time of singing, games, prizes, and creative Bible teaching. For more info visit www.winklerbiblecamp.com or call 204-325-9519.

Jesus' Ministry Begins

- Matthew 4:11-22

1. The time between 4:11, and 4:12

- John 1:29 - John 4

- John the Baptist's testimony of Jesus. John 3:27-30
2. The choice of Capernaum as a base for ministry.
3. Jesus calls some fishermen to follow Him.

- Luke 5:1-11

Exalt Christ
Equip For Service
Edify One Another
Evangelize the Lost
Extend Christ's Love

E-mail: bethel@ourbethelchurch.com
Website: www.ourbethelchurch.com

BETHEL BERGTHALER MENNONITE CHURCH

Box 197 Winkler, MB R6W 4A5 Ph. 325.4536 Fax: 325.5614

Senior Pastor – Randy Smart (325.4466) pastorrandy@ourbethelchurch.com

Associate Pastor/C&C – Mark Sawatzky (362.2937)

pastormark@ourbethelchurch.com

Youth Pastor – Elden Shore (332.1991) pastorelden@ourbethelchurch.com

Lay Minister - Gerald Thiessen (325.4496)

Ministerial Chairman – Kenton Doerksen (332.1476)

Congregational Chairman – Abe Wieler (325.6957)

Women's Ministry – Nancy Falk (325.4584)

Music Committee – Andrina Doerksen (325.5389)

Care Groups – Gerald Thiessen (325.4496)

SS Superintendent – Mark Toews (325.6854)

Awana – Jonathan Peters (325.2093) parksidjonathan@gmail.com

Children's Church Coordinator – Cheri Klassen (332.1430)